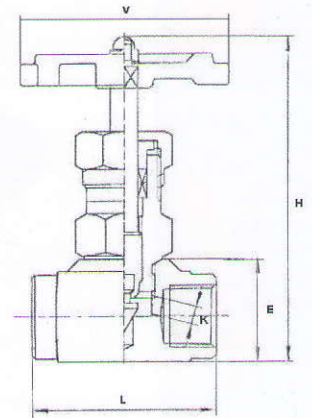
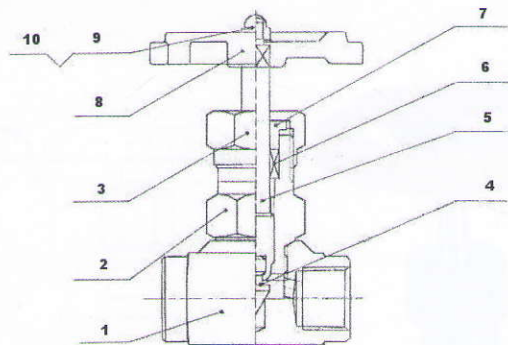


CVL45

VALVOLA SPILLO NEEDLE VALVE



Nº	Name	Material
1	Body	ASTM A-105
2	Bonnet	ASTM A-105
3	Nut	ASTM A-105
4	Needle	Inox. A182 F6 / S.S. A182 F6
5	Stem	Inox. A182 F6 / S.S. A182 F6
6	Stem packing	PTFE + graphite
7	Packing nut	ASTM A-105
8	Handwheel	Alluminium
9	Nut	Carbon Steel
10	Washer	Carbon Steel

Nº	Name	Material
1	Body	S.S. ASTM A182 F316
2	Bonnet	S.S. ASTM A182 F316
3	Nut	S.S. ASTM A182 F316
4	Needle	S.S. 316+Stellite
5	Stem	S.S. ASTM A182 F316
6	Stem packing	PTFE + graphite
7	Packing nut	S.S. 316+Stellite
8	Handwheel	Alluminium
9	Nut	DIN 1.4301 (S.S. 304)
10	Washer	DIN 1.4301 (S.S. 304)

Size	PSI	DIMENSIONS				
		E	H	L	K	V
1/4"	3000	25	85	50	3	63
3/8"	3000	30	100	55	4	63
1/2"	3000	34	115	60	6	72
3/4"	3000	40	120	70	8	72
1"	3000	45	138	75	9	80
1 1/4"	3000	57	165	90	11	100
1 1/2"	3000	67	185	100	15	120
2"	3000	78	195	120	18	140

- Attacchi GAS F/F oppure NPT F/F
- Guarnizione stelo PTFE+Graphite

- Threaded ends according BSP F/F or NPT F/F
- Stem Packing PTFE+Graphite

